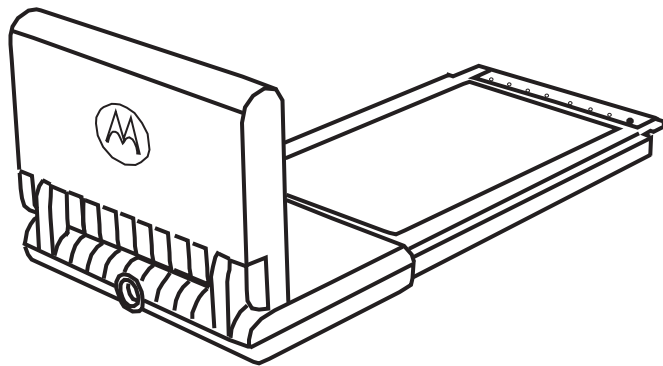


Installing and using the Expedience[®] PC Card



Welcome

This document describes how to install and use your Expedience PC Card to obtain wireless high-speed Internet access. You can plug the Expedience PC Card into any laptop computer with a side access cardbus slot.

The Expedience PC Card contains an internal antenna that can connect with base stations. Once a connection is established between the Expedience PC Card and a base station you can access your service provider's network.

Before you begin

Figure 1 illustrates the Expedience PC Card package contents.

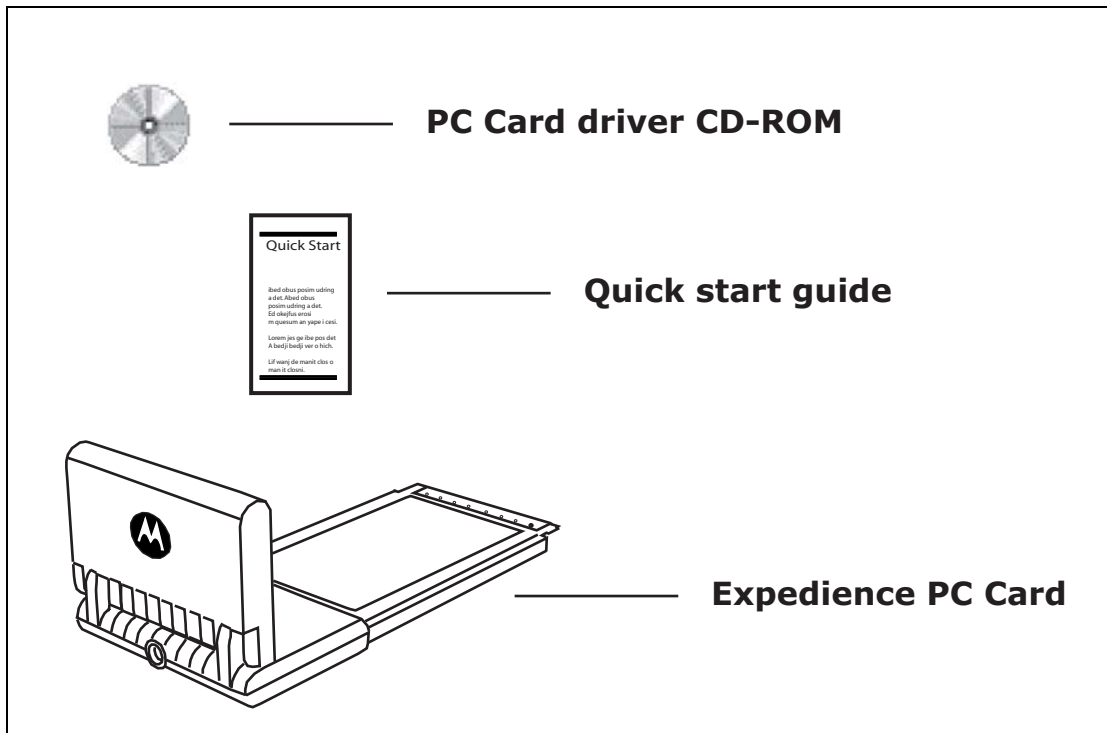


Figure 1 Expedience PC Card package contents

Table 1 lists the standard contents in your Expedience PC Card package.

Table 1 Expedience PC Card package components

Component	Part number
Expedience PC Card	900-0512-0000
Expedience PC Card driver CD-ROM	110-0512-000
Quick start guide	102-0512-0000

Installing the Expedience PC Card driver

Before using the Expedience PC Card for the first time, install the driver for the card.

- 1 Insert the CD-ROM into laptop PC's CD drive. The installation program automatically runs.

If the installation program does not automatically run:

- From the **Start** menu, select **Run**. The Run dialog box opens.
 - In the **Open** field, type **x:setup** where **x** is the letter assigned to the laptop computer's CD drive.
 - Click **OK**.
- 2 To install the Expedience PC Card driver software, follow the instructions that appear on your laptop's screen.

Plugging in the Expedience PC Card

- 1 After powering on your laptop, slide the Expedience PC Card into the slot on your laptop.

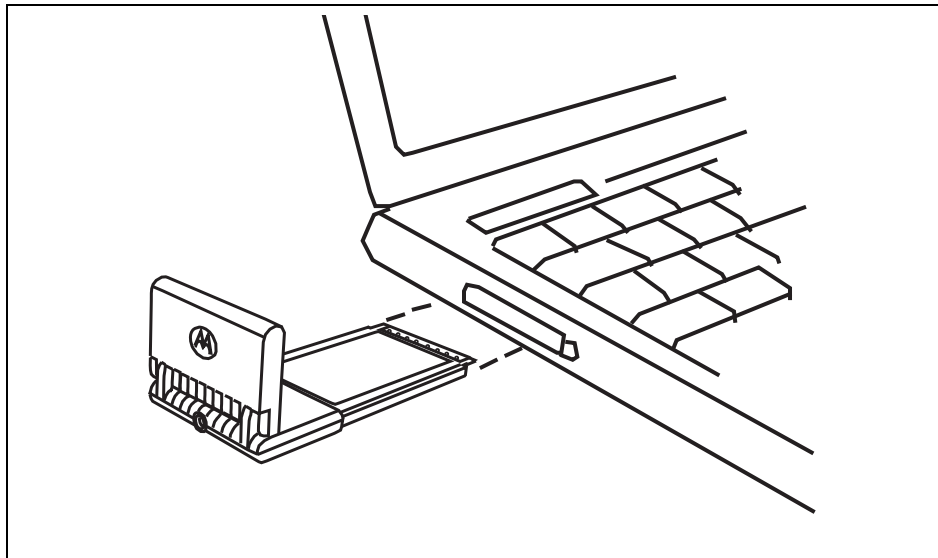


Figure 2 Plugging Expedience PC Card into laptop computer

- 2 The Expedience PC Card detects the network. You can discover the connection status of your Expedience PC Card in the following ways:

- The icons displayed in your laptop's system tray vary depending on the operating state of the Expedience PC Card and the signal strength the Expedience PC Card detects.



Figure 3 System tray icons: connected/signal strength icons

- You can also show the status of the Expedience PC Card by rolling your mouse over the system tray icon. The status tip box appears (Figure 4).

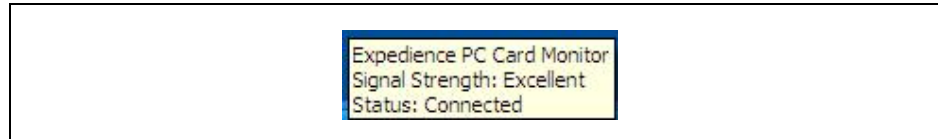


Figure 4 Status tip box

- 3 To obtain the best signal, follow the process described in the section “Optimizing the signal”.

Choosing an Expedience PC Card network connection or a Wi-Fi connection

You cannot establish an Expedience PC Card connection to a network if your computer is already connected to a Wi-Fi network.

To determine the connection to be used:

- 1 If a Wi-Fi connection exists when the Expedience PC Card is plugged in, the Expedience PC Card or Wifi? dialog box opens.

The Expedience PC Card or Wifi? dialog box also appears if a Wi-Fi card is inserted into the laptop after the Expedience PC Card is operating.

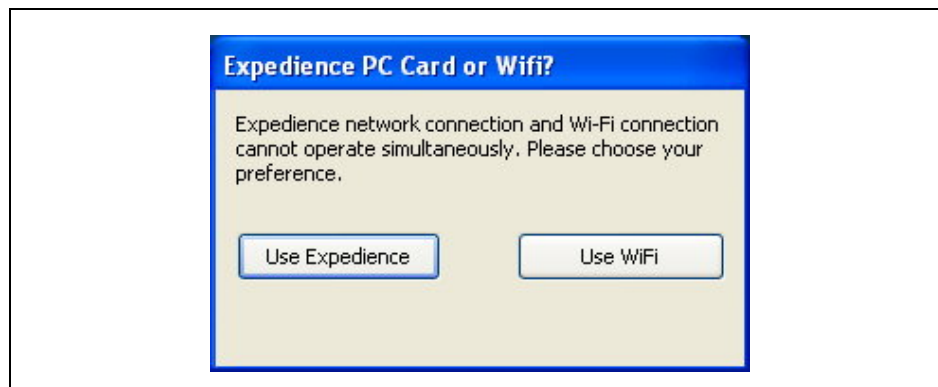


Figure 5 Expedience PC Card or Wifi window

- 2 Perform one of the following:
 - If you want to connect to the network using the PC Card, click **Use Expedience**.
 - If you want to connect to the Wi-Fi network, click **Use WiFi**.

3 One of the following dialog boxes appears, asking you to confirm your choice of networks.

- If a Wi-Fi card is present when you disable the Expedience PC Card, you are asked if you want to re-enable Wi-Fi:

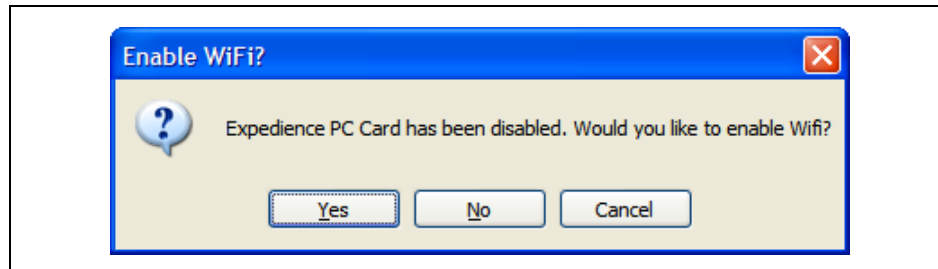


Figure 6 PC Card disabled: Enable WiFi window

- If Wi-Fi networking is operating when you choose to enable the Expedience PC Card, you must confirm if you want to establish the Expedience PC Card connection.

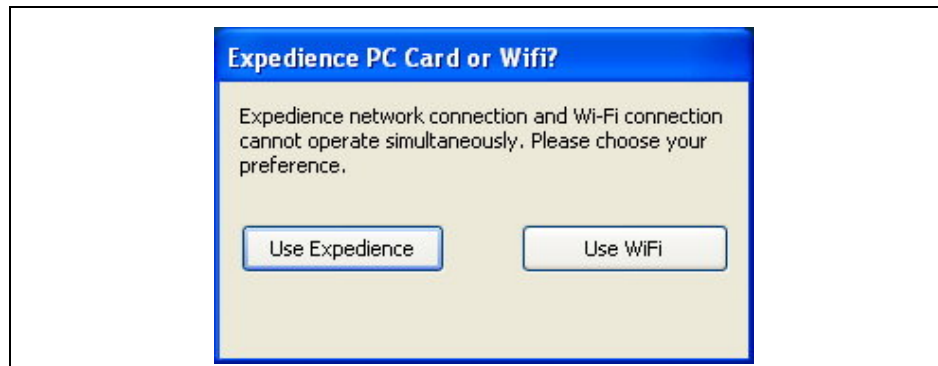


Figure 7 Connect using Expedience window

- If you eject the PC Card from the computer, a dialog box appears, asking if you want to enable a WiFi connection.

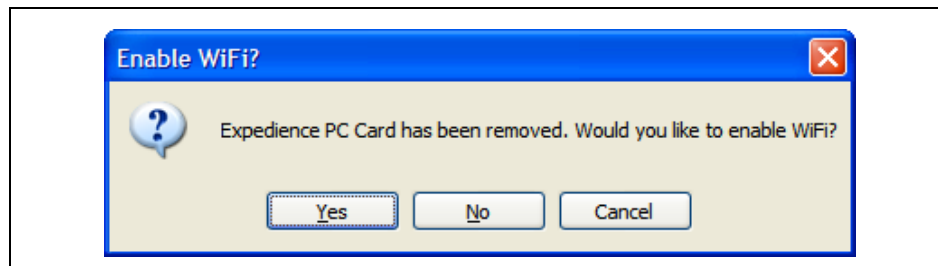


Figure 8 PC Card removed: Enable WiFi? window

Optimizing the signal

The Signal Optimizer is a graphic software tool that makes it easier to optimize the PC Card's connection to the network.

To open the Signal Optimizer:

- 1 In the Windows system tray, click on the connection icon.

The Expedience Signal Strength window opens. The appearance of this window depends on the strength of the connection to the network.

The number of arcs displayed is a measure of signal quality.



Figure 9 Signal quality dialog box

- 2 To obtain a stronger connection, move the laptop around and point the Expedience PC Card in different directions.

Other signal quality messages in the Signal Optimizer

Other messages are displayed by the Signal Optimizer when the following events occur:

- Card ejected from PC
- Card disabled

If you eject the Expedience PC Card from the laptop, the message “Expedience card removed” appears in the Expedience Signal Strength window.



Figure 10 Signal Optimizer: Expedience card removed

When you disable the PC Card, perhaps to switch to a Wi-Fi network, the message “Expedience card disabled” appears in the Expedience Signal Strength window.



Figure 11 Signal Optimizer: Expedience card disabled

Enabling or disabling the Expedience PC Card connection

You might want to disable the Expedience PC Card connection when you are not using the network, in order to conserve the power of your laptop computer's battery.

You also might want to disable the Expedience PC Card connection in order to connect to a Wi-Fi network by using a Wi-Fi Card/Connection available on your computer.

To enable or disable the Expedience PC Card connection:

- 1 In the Windows system tray, right click on the connection icon.
- 2 From the menu that appears, select one of the following:
 - To use the Expedience PC Card to connect to an network, select **Enable**.
 - To disable the Expedience PC Card connection, select **Disable**.

If you select **Disable**, the Expedience PC Card connection is disabled. The connection icon is removed from the system tray.

- 3 To enable your Wi-Fi connection, use the Windows control panel.

- 4 To re-enable the Expedience PC Card connection, select **Enable**



Figure 12 System tray icon: Expedience PC Card disconnected

Unplugging the Expedience PC Card

Always use the Safely Remove Hardware system tray icon before unplugging the PC Card from your computer.

- 1 Double click the Safely Remove Hardware system tray icon. The Safely Remove Hardware window appears.
- 2 In the hardware devices list, select the Expedience modem, then click **Stop**.
- 3 In the dialog box that appears, confirm your choice to stop the modem.
- 4 Click **Close**.
- 5 Safely remove the PC Card from your computer.

Uninstalling the Expedience PC Card

To uninstall the Expedience PC Card, from the **Start** menu, select **Programs, Motorola, Connection Manager, Uninstall**.

This removes both the Connection Manager and the driver software from the computer.

Note: There may be variations in these designations. These variations depend on the service provider supplying your PC Card.
